

on tour

kateandsarah.com



kate peterson



sarah cleaver

pleasantly aggressive folk duo

photos: alexandra livesay

Kate and Sarah's blend of fluid vocals and **real-life lyrics** are so compelling that I couldn't stop listening. The first time I heard them, they stopped my heart.

--Jennifer Vanasco, Chicago Free Press

As these two ladies take the stage or any living room near you, you won't be able to deny the power of their laughter, combined with their genuinely emotive chords and words. These two women are not afraid to sing loud and sing hard. The sensitive tug of their voices can pull you through worlds of progressive politics, and their harmonies have been described as the kind that build so smoothly until suddenly they start to shake your insides.

The duo continues to navigate the endless road of music touring and are impressive in their search to find where their music lies and breathes within all of us. These are not two musicians that are just looking for audiences to play to. They are looking for audiences to sing to. To laugh with. To appreciate. To breathe in and to take home. Their humor has welcomed us all, their melody has held us, and their movement has energized us.



photo: ame zimmerman



Collectively Kate and Sarah have shared stages with many-a-talented nationally touring performers including Toshi Reagon, Alix Olson, The Butchies, Bitch, Pamela Means, Ellis, Edie Carey, Chris Pureka, Myshkin's Rubley Warblers, Sista Otis, Rose Polenzani, Ember Swift and more.

They continue to criss cross the country in support of their EPs *Torch Song Evolution* (Winter 2004) and *eight live songs* (October 2005). Previous independent albums include Kate Peterson's *Undone* (2005) and *More to Me* (2001) and Sarah Cleaver's 2004 release *From Where I Stand*. Their latest full-length albums are distributed by Goldenrod Music. The duo's first full length studio album is due out Summer '06.

"I adore Kate Peterson and her mellifluous, aching gravelly voice. Kate transforms, nonchalantly, mundane stories into strummingly sensual, powerful songs."

- progressive queer artist-activist Alix Olson

"Sarah is a part of the next generation of conscientious artists knocking on your door. Give her a listen and a chance to be heard."

-Holly Near

k a t e & s a r a h p e t e r s o n c l e a v e r

www.kateandsarah.com

"To hear these brave women pour out lyrics so deeply personal and honest is to become a witness to their healing. Together they bring an intimacy to the stage that captivates and inspires; you can't help but feel like you're healing with them. They are truly an act of greatness."
-- Carla Kucinski, Lansing NOISE

"These two singer/songwriters have something to say that audiences want to hear... and they deliver their heartfelt messages with an irresistible musical flair that moves people to the core. Their aggressive acoustic style and honest, thought-provoking lyrics have been winning over crowds throughout the country. Together, their harmony is powerful and uniquely beautiful. Sarah and Kate left our audience on their feet and begging for more."

- Cheryl VanDeKerkhove,
Producer
Women In The Arts Festival

developed markets / venues

michigan:

lansing:
michigan pride
creole gallery
magdalena's tea house
temple club
traverse city: union st.
ann arbor:
university of michigan
crazy wisdom tea house
metro detroit:
motor city pride
xhedos café
mt. pleasant: u cup

illinois:

chicago:
uncommon ground
heartland cafe
green note house concerts
big star cafe
wluw radio
north carolina:
greensboro:
university of north carolina
the green bean
time out saloon
chapel hill: the cave
asheville: malaprops

new york:

new york city:
rockwood music hall
sidewalk café
the c-note
bluestockings
wisconsin:
madison: portal music café
milwaukee: bremen café
ohio:
toldeo: people called women
dayton: canal street tavern
indiana:
indianapolis:

indy indie's Big TaDo
the abbey
south bend:
another bookstore
lula's cafe
washington dc
house concert
pennsylvania
philly: grape street pub
oregon
portland: mississippi pizza
minneapota
minneapolis: acadia cafe

discography

Sarah & Kate

Torch Song Evolution
(2005)



Eight Live Songs
(2005)



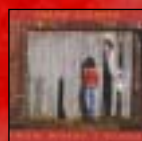
Kate Peterson
Undone (2005)



More to Me (2001)



Sarah Cleaver
From Where I Stand
(2004)



instrumentation: compensation: tech needs:

sarah:

acoustic guitar, mandolin,
harmonica & vocal

kate:

acoustic guitar, djembe,
harmonica, bass, vocal

\$200 - \$1200
(depending on distance
traveled and length of
set. Just call and ask!)

2 vocal mics
2-3 direct inputs
*sarah & kate can supply
all equipment for smaller
venues.



booking@kateandsarah.com

517.927.5126 / 517.281.1480

123 Clifford St. Lansing, MI 48912

contact:

